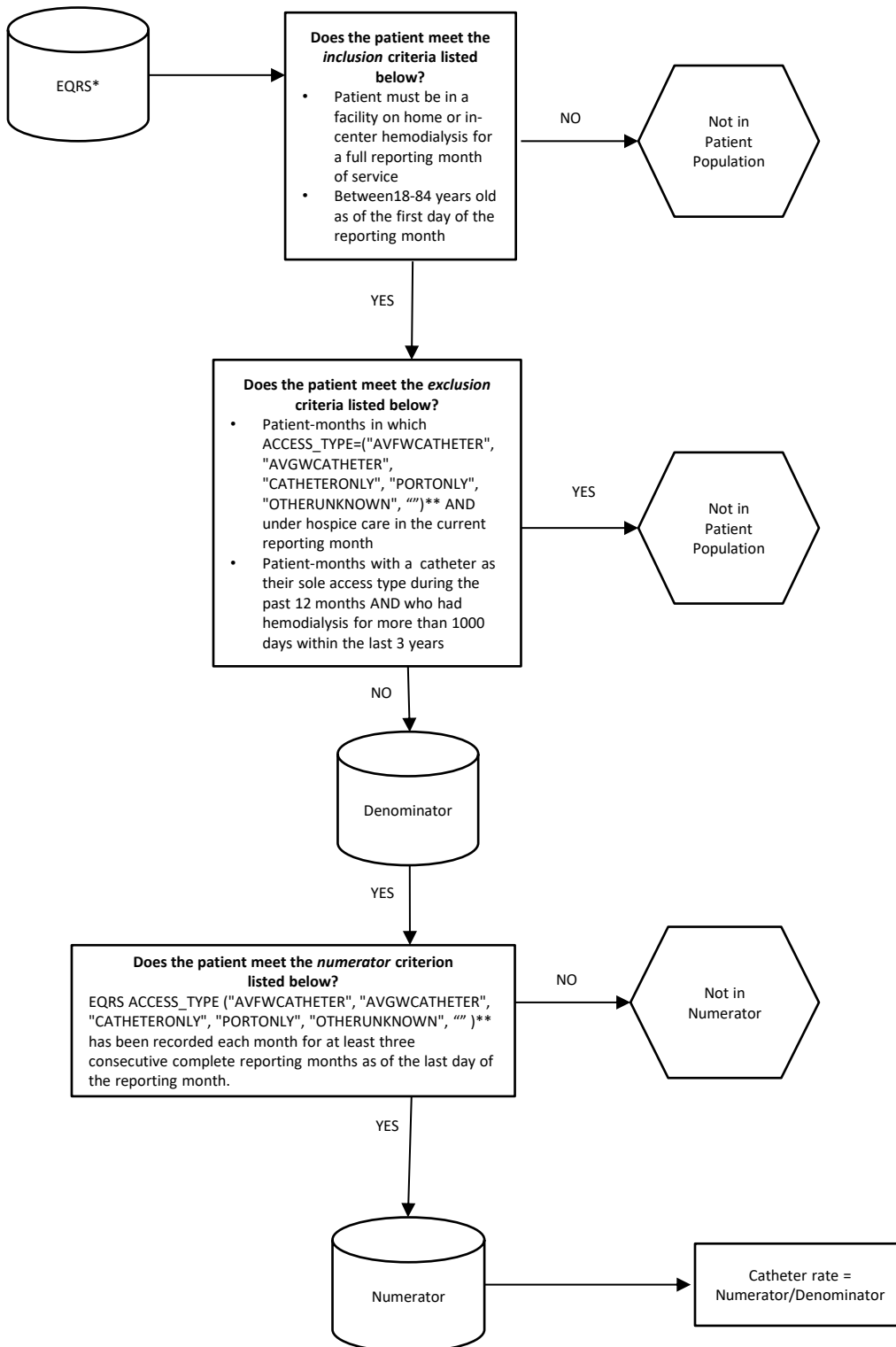


# Measure Calculation Flow Chart

## Hemodialysis Vascular Access: Long-term Catheter Rate



\*Multiple data sources include CMS End Stage Renal Disease Quality Reporting System (EQRS), the CMS Annual Facility Survey (Form CMS-2744), Medicare dialysis and hospital payment records, the CMS Medical Evidence Form (Form CMS-2728), transplant data from the Organ Procurement and Transplant Network (OPTN), the Death Notification Form (Form CMS-2746), and the Social Security Death Master File.

\*\*ACCESS\_TYPE "AVFWCATHETER" represents AV fistula combined with a catheter, "AVGWCATHETER" represents AV graft combined with a catheter, "CATHETERONLY" and "PORTONLY" both represent catheter only, "OTHERUNKNOWN" represents other/unknown, and "" represents missing.